

IMPROVING the FINANCIAL & OPERATIONAL HEALTH of UK SCHOOLS



CHARLOTTE WESTWOOD
EDUCATION TODAY
MANAGING EDITOR



LANA STOYLES
NEXUS MAT
HEAD OF BUSINESS
TRANSFORMATION



JAMES ROACH
INCLUSIVE MAT
CEO



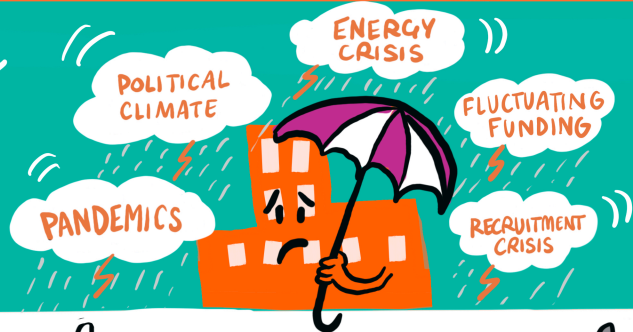
SHARON CARLYON
INCLUSIVE MAT
COO



STEWART MCLUSKEY
CIVICA
EDUCATION
EXECUTIVE
DIRECTOR

SETTING THE SCENE

IT IS A DIFFICULT TIME FOR SCHOOLS & MATS



THERE IS MONEY IN THE SECTOR BUT A LACK OF FINANCIAL CLARITY



HOW DO YOU PLAN FOR THE UNKNOWN?



AS A SECTOR WE ARE 15 YEARS BEHIND
HOW DO WE IMPLEMENT AT ON AN INDUSTRIAL SCALE WITHOUT THE RIGHT INFRASTRUCTURE?

WE NEED INTEGRATED SYSTEMS THAT CREATE EFFICIENCY & RELIEVE PRESSURES

BE OPEN MINDED & COLLABORATE WITH EXTERNAL EXPERTS

THE RIGHT PARTNERSHIPS CAN CATAPULT YOU TO ACHIEVE YOUR GOALS

UTILISING EXPERTISE TO ENHANCE WHAT YOU HAVE... & TO SEE WHAT NEEDS INVESTMENT

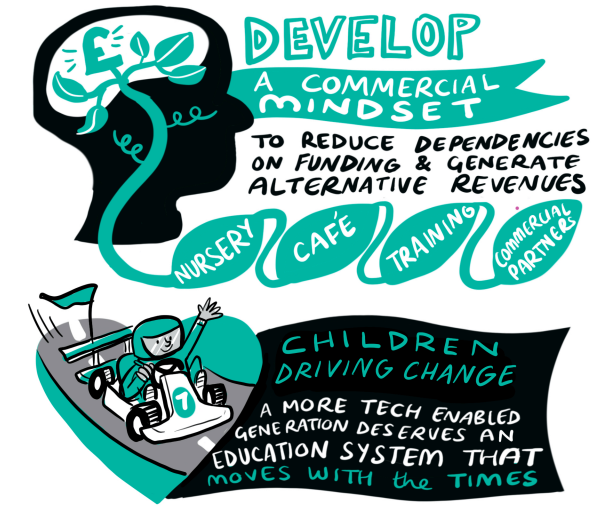
WE NEED TO EMBRACE AI

DATA IS KEY
CONNECTING THE RIGHT PEOPLE TO THE RIGHT DATA



BRING EVERYONE ON THE DIGITAL JOURNEY
MAKE SURE WE GO AT A PACE THAT DOESN'T LEAVE STAFF BEHIND

CULTURE SHIFT IS VITAL



LOOKING TO OTHER SECTORS for NEW WAYS OF WORKING INSPIRATION
IT'S NOT ABOUT SPENDING LESS BUT SPENDING SMARTER



SAVINGS from BIG SYSTEMS ARE INSTANT
INCREASED STABILITY = BETTER COMMUNICATION, WELLBEING & SUCCESS!